

# Sustainable Consumption & Production

by Erma Suryani



# Sustainable Consumption & Production (SCP) Outline:

- 01 What is SCP?
- 02 Why do we need SCP?
- 03 How to Manifest SCP?
- 04 Implement SCP in our daily lives
- 05 SCP and COVID-19 Pandemic
- 06 Role of Research on SCP



01  
....

# What is SCP?



# What is Sustainable Consumption & Production (SCP)?



- the use of services and related products
- which respond to basic needs and bring a better quality of life

what

by



minimizing the use of natural resources and toxic materials as well as the emissions of waste and pollutants



02  
....

# Why do we need SCP?





Health, education,  
equity, and  
empowerment are  
all adversely  
affected

## Fact & Figure (1)

01

We consume more resources  
than ever

02

Waste and pollution grow

03

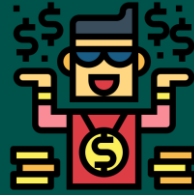
The gap between rich and poor  
is widening

## Fact & Figure (2)

The economic gap  
between the poor  
and the rich  
continues to grow



1.2 billion people  
live in poverty



Rich People



Want more



The Poor



Need The  
Essentials

## Fact & Figure (3)



1820

1,042 B  
people



1920

1,86 B  
people



2020

7,7 B  
people



2020

exploded to  
7 times

- The number might seem insignificant until we consider the fact everyone needs residential land, fresh water, and food.
- The earth is shrinking, and humans are growing, making sustainable consumption and production getting more crucial than ever.
- If we keep consuming and producing like we do currently, there will come a day when the earth can no longer provide us with the resources necessary to fulfil our needs.

### Use Your Resources



Effectively



Efficiently



Economically



## Video (1)

<https://www.youtube.com/watch?v=jpf7lyxgy5I>

[Sustainable Consumption and Production](#)



03

....

# How to Manifest SCP?



# How to Manifest SCP : Need a Holistic Approach



**Decoupling  
Environmental  
Degradation from  
Economic Growth**



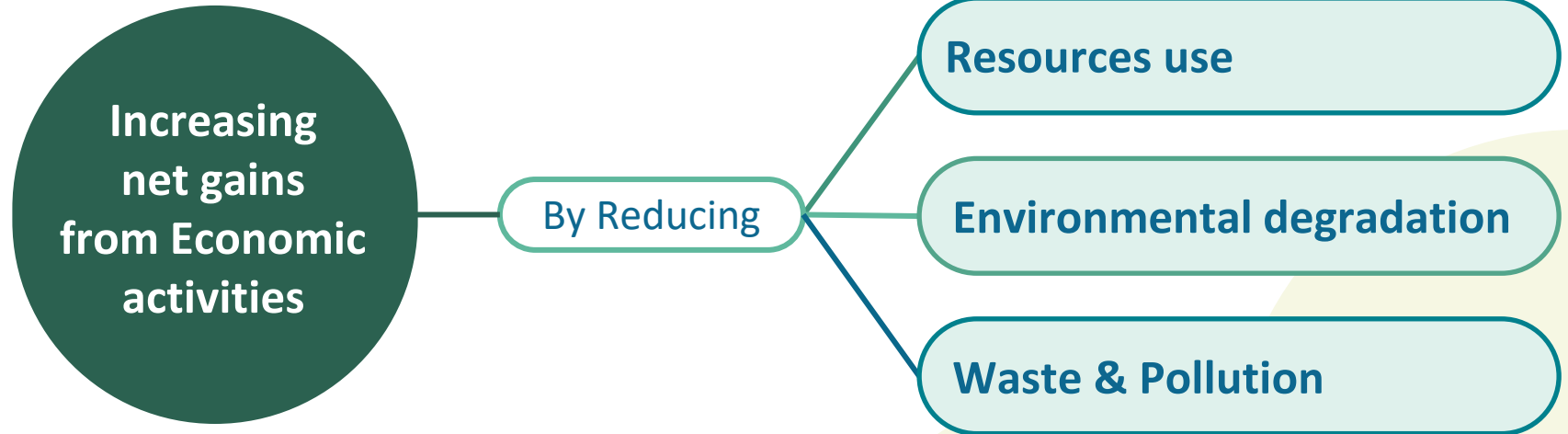
**Applying Life  
Cycle Thinking**



**Sizing  
Opportunities**



# Decoupling Environmental Degradation from Economic Growth





# Applying Life Cycle Thinking

**Achieving resource efficiency in production & consumption phases**

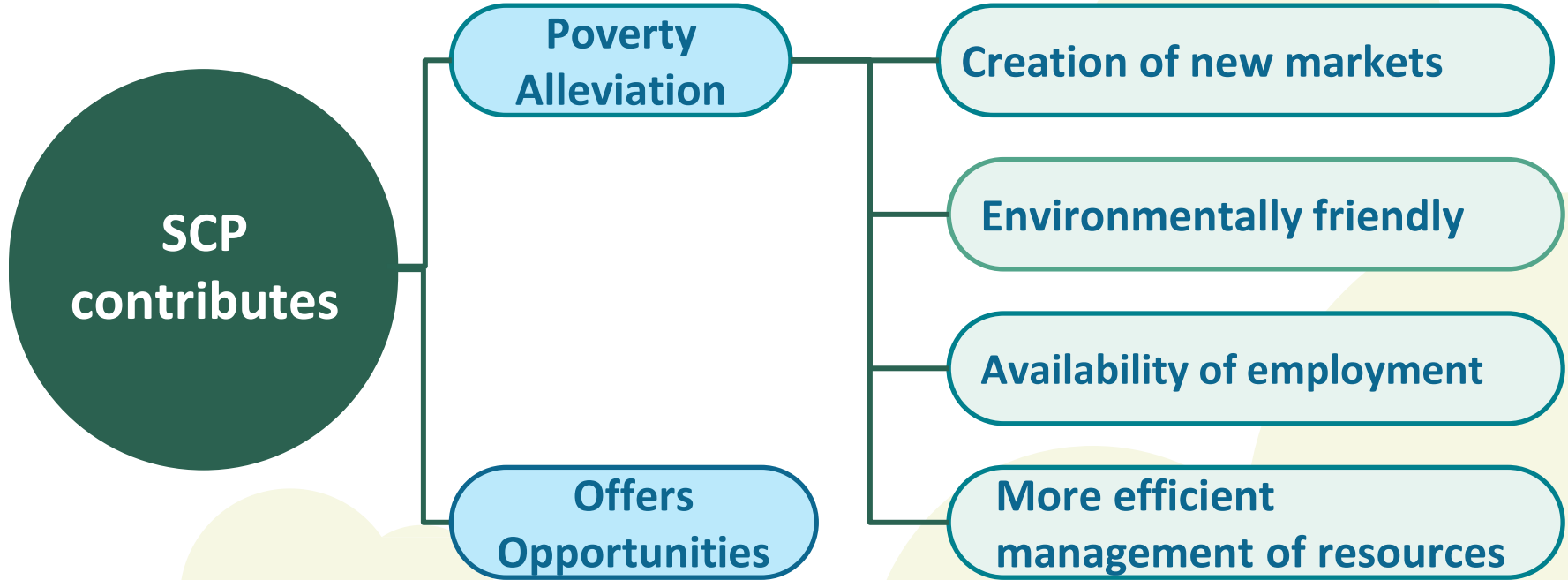
production, distribution, marketing, use, waste disposal, re-use of products and services.

**Increasing**

The sustainable management of resources



# Sizing Opportunities



04  
....

# Implement SCP in Our Daily Lives



# Implement SCP in Our Daily Lives (1)



We need to reduce our carbon emissions and change our current consumption and production patterns to promote economic growth.



Waste and resource management is an important target to achieve sustainable consumption and production goals.



SCP can also greatly contribute to poverty alleviation and the transition to a low-carbon and green economy. It requires cross-sectoral and multi-stakeholder collaboration in all countries.



## Implement SCP in Our Daily Lives (2)



We could utilize the less waste lifestyle by composting and prolonging the life of a certain item.



In practice, we could start by shopping at a bulk store, choosing to repair an item than buying new ones, or buying second hand.

05  
....

# SCP & COVID-19 Pandemic



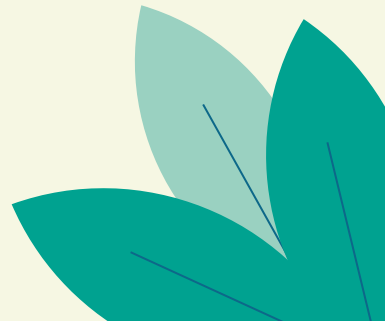
# SCP & COVID-19 (1)

PANDEMIC	ECONOMIC CONSEQUENCES	EDUCATION
<ul style="list-style-type: none"><li>• triggering a large proportion of economic crises</li><li>• puts a large number of people in poverty</li></ul>	<ul style="list-style-type: none"><li>• significant and far-reaching</li><li>• affecting capital flows, business operations, employment, and job.</li></ul>	<ul style="list-style-type: none"><li>• forcefully digitalized</li><li>• impacting more than 1.2 B students in more than 170 countries (72% of all students)</li></ul>

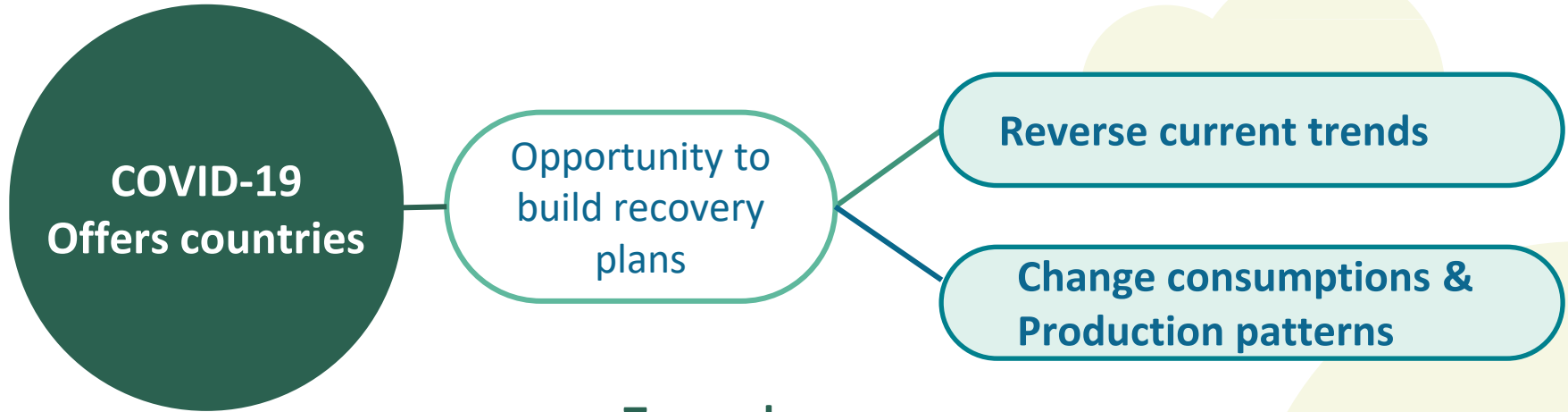
## Video (2)

[https://www.youtube.com/watch?v=PkTOU\\_JAdfM](https://www.youtube.com/watch?v=PkTOU_JAdfM)

Turning crisis into opportunity: How has COVID-19  
changed our lives?



# SCP & COVID-19 (2)



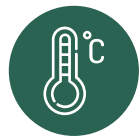
**Towards more sustainable future**



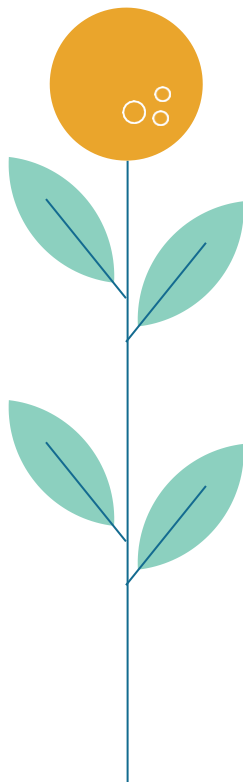
# COVID-19 Challenges Towards SCP



**Zero  
Hunger**



**Climate  
Change**



**Environmental  
Degradation**



**Other Negative  
Consequences**

# Recommendations for The Policy Makers & Practitioners : Consumption Domain (1)



The COVID-19 situation creates large variation in the consumption of essential items, we should consider the demand for essential items .



The lockdown in various parts of the world triggers the demand for online deliveries of products, especially food and grocery items, which is becoming an additional cause of food waste in such pandemic.



Due to restricted movements, the consumption of fossil fuels is reduced significantly. This results in improving environmental sustainability.

# Recommendations for The Policy Makers & Practitioners : Consumption Domain (2)



The COVID-19 period also increases the adoption of social media, which can be crucial for businesses to evaluate the behavior and consumption trends of customers.



Due to uncertainties, consumers are also piling the essential commodities, which may put additional pressure on managing customer demand. Therefore, we need to plan for supply decisions in terms of capacity, workforce, inventory etc. to ensure smooth supply



# Recommendations for The Policy Makers & Practitioners : Production Domain



Current production facilities should shift to digital manufacturing, and promote the digital technologies for production of goods.



A strong coordination mechanism is required among and between stakeholders such as government, manufacturers, medical institutions, NGOs, and possibly military agencies to better control the infection rate of such pandemic.



The pandemic control can be handled with the adoption of a robust information technology management system to share the real-time production and consumption patterns.

06  
....

# Role of Research on SCP



# Role of Research on SCP

0.1•

Identify more-sustainable solutions for both consumption and production systems.

0.2•

Propose model to study the factors that impact sustainability, based on three pillars: circular economy, sustainable consumption and production.

0.3•

Provide recommendations to policy-makers in order to take actions directly on SCP, such as promoting the use of recycled raw materials





# THANKS!

---

